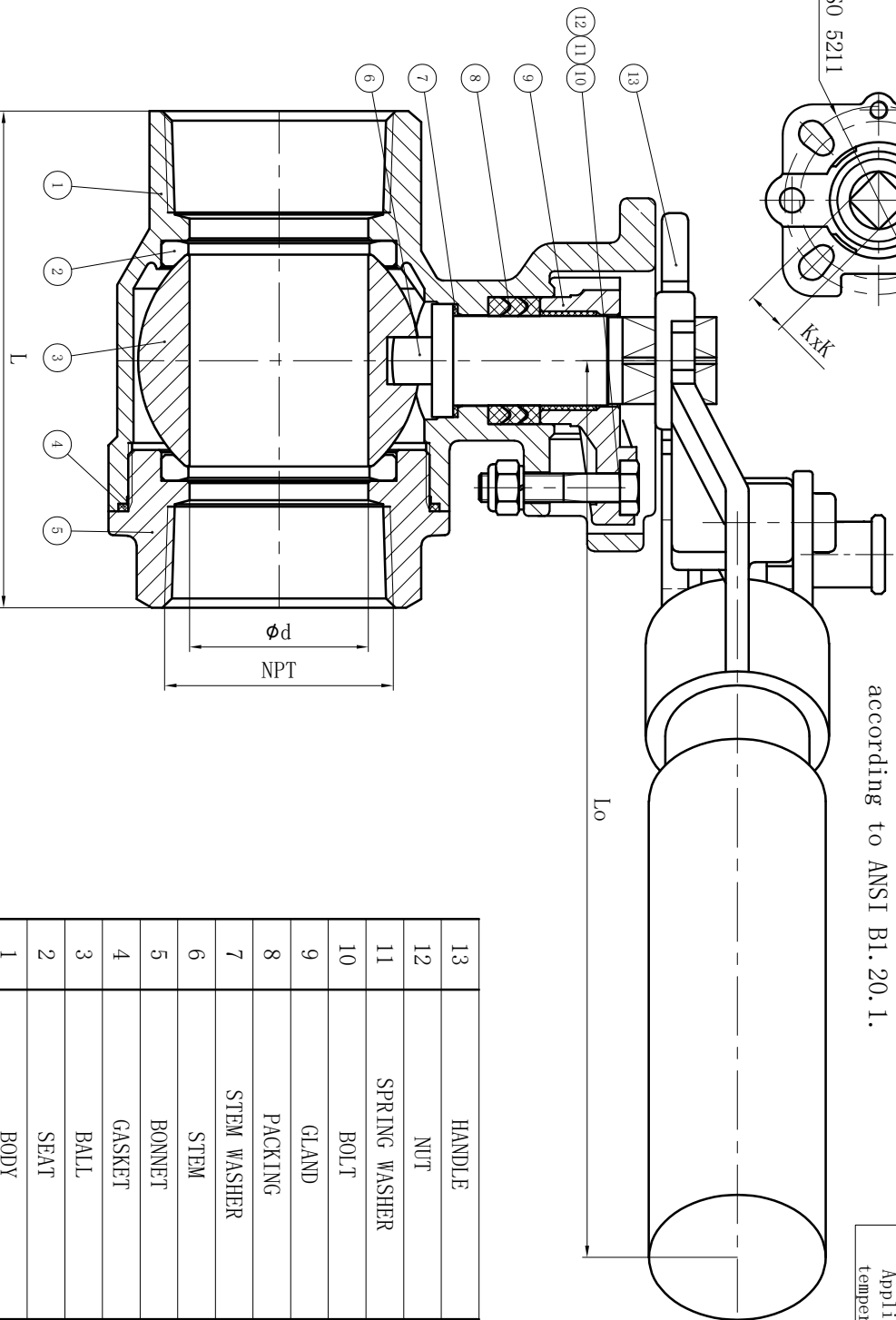
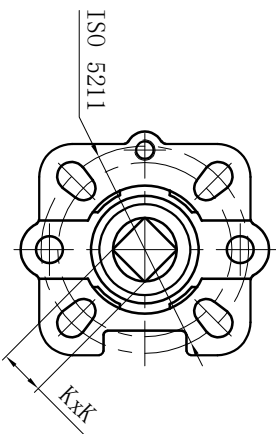
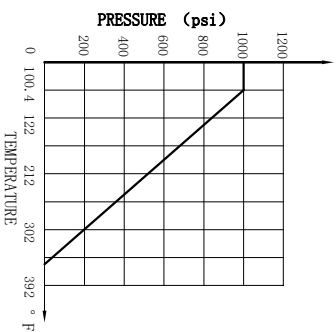


- NOTE:
1. Design and Manufacture for valve according to ASME B16.34.
 2. Inspection and Test for valve according to API 598.
 3. The connection of screwed for valve according to ANSI B1.20.1.



Nominal pressure		1000PSI	
Shell test	10.4	MPa	test medium
Test pressure	Back seal test	0.6	water temperature
Back seal test	gas seal test	air	Test temperature
Applicable medium	Applicable temperature	water, oil, gas	normal temperature
		-20~356°F	



DN	L	d	NPT	ISO 5211	K	Lo
15	2.48	0.59	1/2	F04	0.35	7.28
20	2.87	0.79	3/4	F04	0.35	7.28
25	3.31	0.98	1	F05	0.43	8.66
32	3.86	1.26	1 1/4	F05	0.43	8.66
40	4.15	1.5	1 1/2	F07	0.55	11.22
50	4.74	1.93	2	F07	0.55	11.22

NO.	DESCRIPTION	QTY	MATERIAL
13	HANDLE	1	/
12	NUT	2	A2-035
11	SPRING WASHER	2	304
10	BOLT	2	A2-70
9	GLAND	1	CF8
8	PACKING	-	RPTFE
7	STEM WASHER	1	RPTFE
6	STEM	1	316
5	BONNET	1	CF8M
4	GASKET	1	RPTFE
3	BALL	1	316
2	SEAT	2	RPTFE
1	BODY	1	CF8M

MARK	BEFORE MODIFIED	AFTER MODIFIED	DATE
DRA.		APP.	
CHK.		DATE	
ANIX ®			
ANIX VALVE USA		SCALE	
2PC Ball Valve 1000PSI, NPT High Mounting Pad		SRH-BVH12R6N/1000	